

15TH LATEST ADVANCES IN PSYCHIATRY SYMPOSIUM

AN UPDATE ON PSYCHIATRY: FROM GAMBLING TO GUIDELINES AND BEYOND

Tuesday 19th April 2016

**Royal College of Physicians,
Regent's Park, London**



A collaboration between **Progress** and the **International Society for Affective Disorders**

15TH LATEST ADVANCES IN PSYCHIATRY SYMPOSIUM

Dear Delegate,

We warmly invite you to the **15th Latest Advances in Psychiatry** symposium on behalf of the International Society for Affective Disorders (ISAD) and the journal *Progress in Neurology and Psychiatry* (Wiley).

The symposium will focus on **An Update on Psychiatry: From Gambling to Guidelines and Beyond**. We are delighted to have some high profile speakers covering a range of hot topics, including Professor Janet Treasure, who will be giving the Keynote Lecture entitled 'What's new in treatment for eating disorders?'

The symposium is intended to be part of your CPD portfolio, so we can provide you with independent, up-to-date, practical information that will help you achieve your professional objectives and enhance your everyday clinical practice.

We hope the opportunity to network with leading clinicians and colleagues will make for a productive and enjoyable day.

We look forward to welcoming you to what remains a prestigious educational event in the UK psychiatry calendar.



Professor Allan Young

President of the International Society for Affective Disorders



Rob Munro

Publisher, *Progress in Neurology and Psychiatry*

REGISTRATION FROM 8.15

9.00 – 9.05	Chairman's introduction
9.05 – 10.05	Keynote Lecture: What's new in treatment for eating disorders? – Professor Janet Treasure, King's College, London
10.05 – 10.15	Vote of thanks
10.15 – 10.30	TEA/COFFEE BREAK
10.30 – 11.15	Pathological gambling: an overview – Dr Henrietta Bowden-Jones, Imperial College, London
11.15 -12.00	<i>Satellite Symposium – organised by Lundbeck</i> Is another antidepressant really needed? – Professor Allan Young, Institute of Psychiatry, Psychology & Neuroscience, London
12.00 – 12.45	LUNCH
12.45 – 13.30	NICE guideline CG178 for schizophrenia - is it evidence based and realistic? – Dr Mark Taylor, The University of Edinburgh
13.30 – 14.15	<i>Satellite Symposium - organised by Sunovion</i> Optimising care in schizophrenia: the challenge of treating early non-responders – Dr Adrian Warnock, Medical Director Sunovion Europe
14.15 – 14.30	TEA/COFFEE BREAK
14.30 – 15.15	Latest update on revised BAP guidelines for depression – Professor Anthony Cleare, King's College, London
15.15 – 16.00	Update on the diagnosis and treatment of ADHD in adults – Professor Philip Asherson, King's College, London
16.00	Chairman's closing remarks

REGISTRATION FORM

Please complete in **BLOCK CAPITALS** and return as soon as possible as places are limited

Title and surname: _____

First name (in full): _____

Job title: _____

Contact address: _____

Contact tel: * _____

e-mail address: _____

Special dietary requirements: _____

Disability/accessibility requirements: _____

Please reserve my place at the Latest Advances in Psychiatry Symposium on 19th April 2016, at the Royal College of Physicians, London. I enclose my cheque for £160 + VAT (**£192**) – Early Bird Rate available until 29th February 2016 or £175 + VAT (**£210**) – standard rate from 1st March 2016, made payable to **John Wiley & Sons Ltd** or debit my credit card. (Please tick box).

CREDIT CARD

Card number: _____

Name on card: _____

Issue number (if applicable): _____ Expiry date: _____

Type (eg VISA, Mastercard, etc.) _____

*You will be contacted by telephone for the CSC (last 3 or 4 digits on reverse of card)

Please tick if you would like to pay by BACS. We will contact you for further details.

I understand you will confirm my place by return post.

Signature: _____ Date: _____

Please return the completed form in an envelope to the Freepost address (no stamp required): Nina Farmer, FREEPOST NAT 21640, Chichester, PO19 8BR.

Places at the meeting are subject to availability. The programme may change in small ways of which you will be informed well in advance.

Your Personal Data

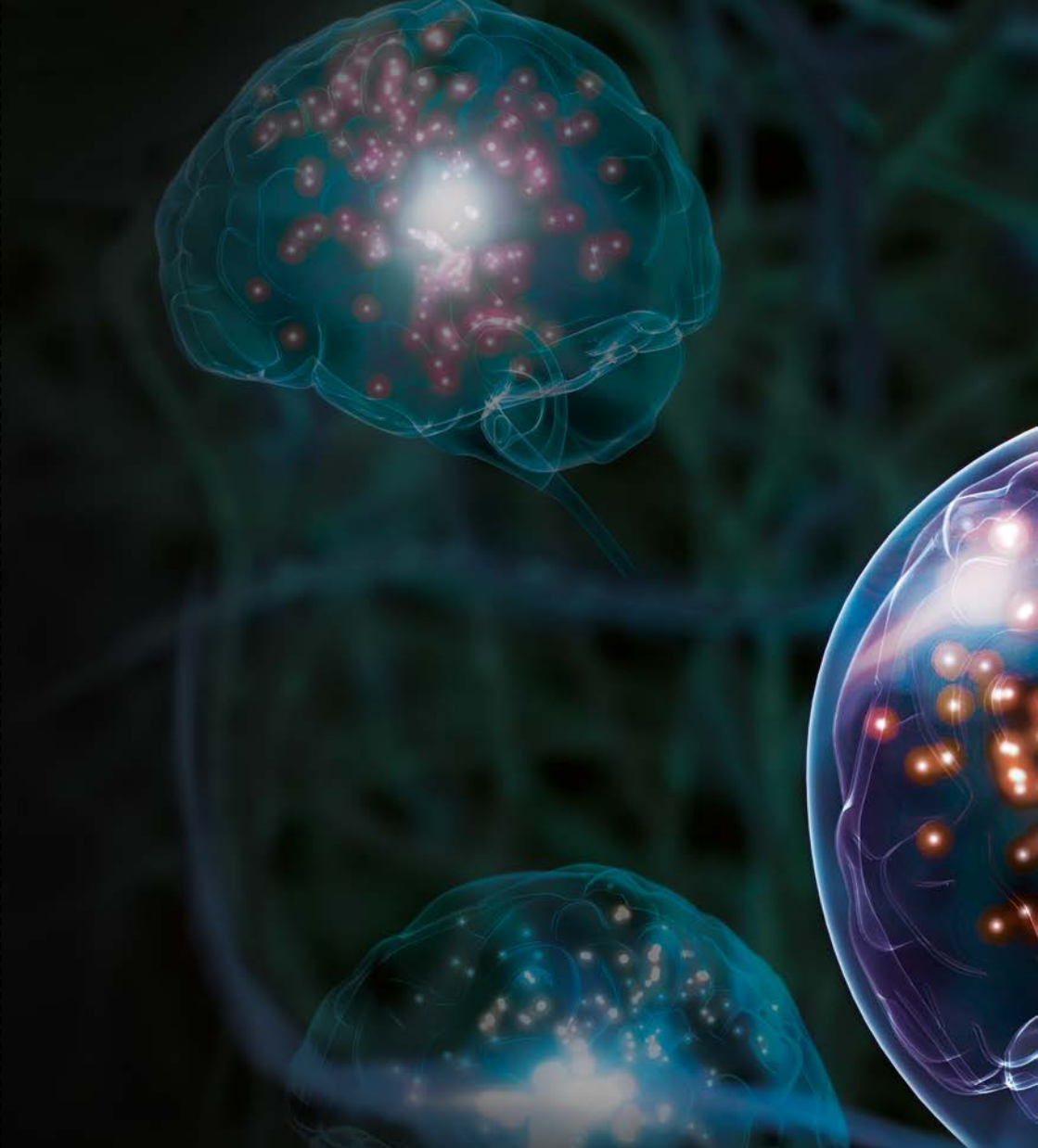
Occasionally we may use your details to keep you informed of educational initiatives of interest to you and available from John Wiley & Sons. Please tick the box if you do not wish to receive this information.

If, at any time, you wish to stop receiving information, please contact the Database Group (databasegroup@wiley.com) at John Wiley & Sons Ltd, The Atrium, Southern Gate, Chichester, West Sussex, PO19 8SQ, UK.

RETURN TO:

Nina Farmer
FREEPOST NAT 21640
Chichester
PO19 8BR

- please remember to enclose your cheque or credit card details
- your cheque should be made payable to John Wiley & Sons Ltd
- we will confirm your place by return post



For further information please contact:

Nina Farmer, John Wiley & Sons, The Atrium, Southern Gate, Chichester,
West Sussex PO19 8SQ Tel: 01243 770182 e-mail: nfarmer@wiley.com
www.progressnp.com

WILEY

